

Dynevor Road

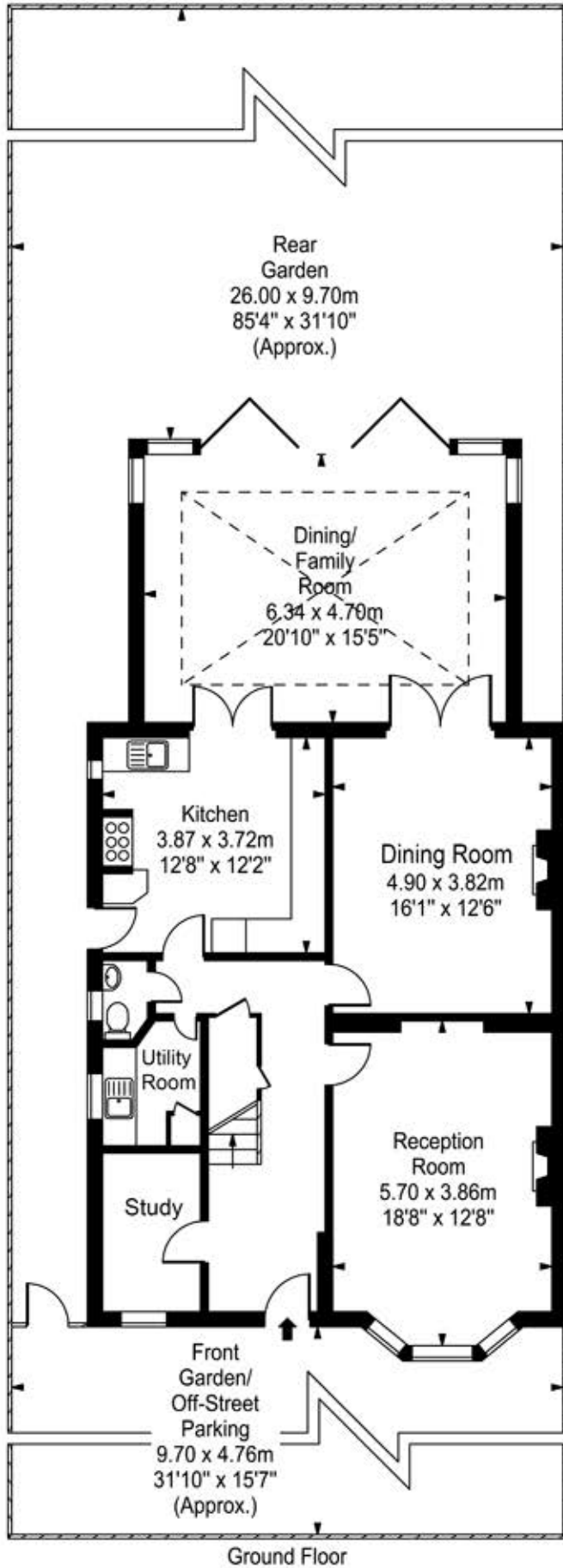
Approx. Gross Internal Area

285 Sq M - 3067 Sq Ft

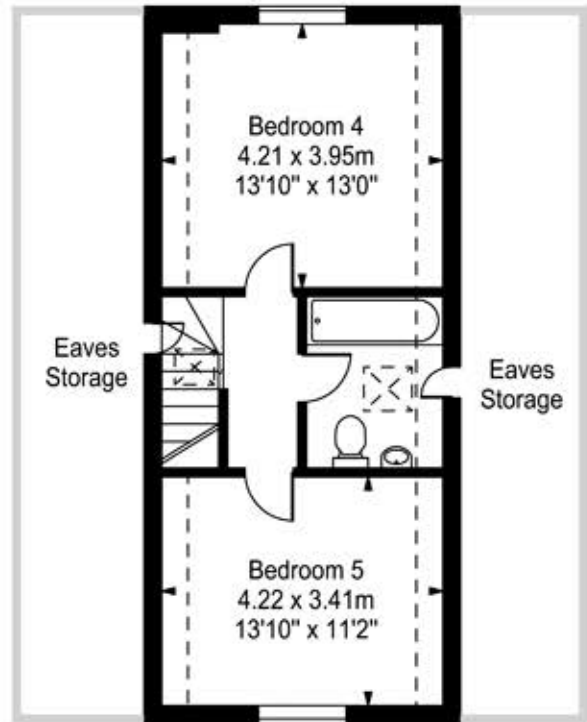
(Includes 41 Sq M - 441 Sq Ft of Eaves Storage)

Key :

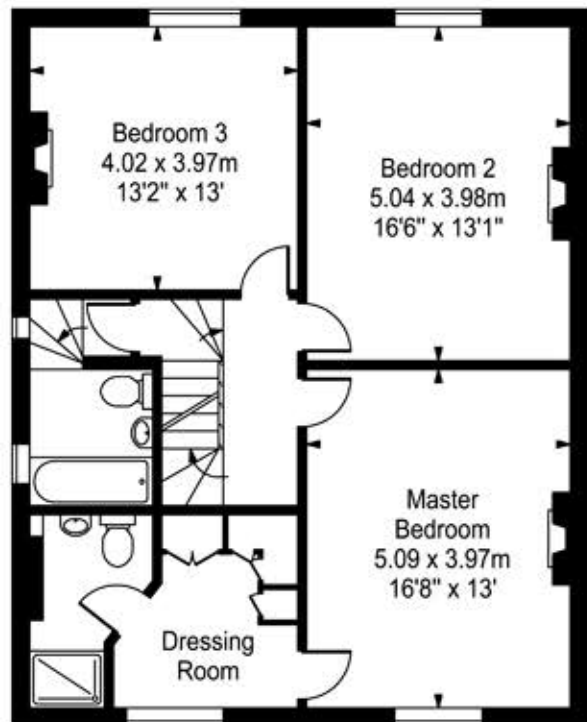
- - - = Reduced headroom below 1.5m / 5'0"



Ground Floor



Second Floor



First Floor

Every attempt is made to assure accuracy, however measurements are approximate and for illustrative purposes only. Not to scale.

Floor plan by www.frameworkphotos.co.uk